



# KEEP FOS KIT DEPOTS SAFE!

## PRACTICE GOOD HYGIENE



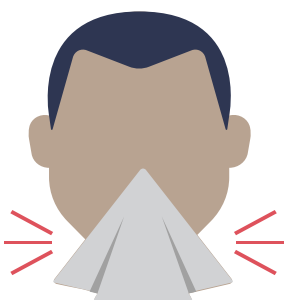
Don't shake hands. Instead, use non-contact greeting methods.



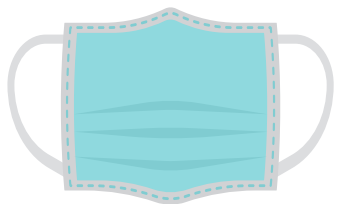
Clean your hands at the door and schedule regular hand washing reminders.



Frequently disinfect tables, desks and other surfaces around your work area.



Avoid touching your face. Cover your coughs and sneezes.



Wear a facemask when you are working with the kits at the depot.

## 3 OPTIONS FOR FOS KIT DEPOTS

### OUTDOOR DEPOTS

Allow for a safe space where donors can deliver their kits outdoors and place the kits in a holding area. The depot volunteer will move the kits to the storage area. This is a perfect option for depots that are open for the same day the truck will arrive.

### SELF-SERVE KIT DEPOTS

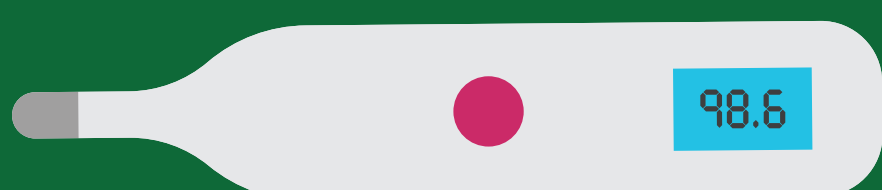
Allow for a safe space where kit donors deliver their kits and move them to the storage area. Depot volunteers do not move the kits. This is the perfect option for kit depot volunteers who need a little help!

### DRIVE-IN KIT DEPOTS

Allows the donors to stay in their cars, while the depot volunteers removes the kits and moves them to the storage area. This is the perfect option for the "hands on" depot volunteers.

## PLEASE STAY HOME IF...

- You are feeling **sick** or experiencing any Covid-19 symptoms.
- You have a **sick family member** at home.



SOURCE: [WWW.CDC.GOV](http://WWW.CDC.GOV)

## MAKE AN APPOINTMENT

Social distancing is important! The FOS Committee is asking all kit donors to contact you prior to dropping off their kits, to limit the number of people at your depot.

